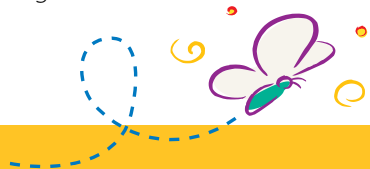


Facts & Statistics

- NF is not a rare disorder, it is the most common neurological disorder caused by a single gene.
- NF1, NF2, and schwannomatosis are genetic disorders which affect more than 100,000 Americans. This makes NF more prevalent than cystic fibrosis, hereditary muscular dystrophy, Huntington's disease and Tay Sachs combined.
- Both forms of NF are autosomal dominant genetic disorders which can be inherited from a parent who has NF or may be the result of a new or "spontaneous mutation" (change) in the sperm or egg cell.
- Each child of an affected parent has a 50% chance of inheriting the gene and developing NF. The type of NF (i.e., NF1 or NF2) inherited by the child is always the same as that of the affected parent, although the severity of the manifestations may differ from person to person within a family.
- NF is worldwide in distribution and affects both sexes equally and has no particular racial, geographic or ethnic distribution. Therefore, NF can appear in any family.
- NF also has a connection to developmental problems, especially learning disabilities, which are five times more common in the NF population than in the general population.
- Accordingly, NF research may benefit an additional 100 million Americans (i.e., 65 million with cancer and 35 million with learning disabilities).
- NF research was launched by the Children's Tumor Foundation 26 years ago and is making great strides toward finding effective treatments.



Children's
Tumor Foundation™
Ending Neurofibromatosis Through Research

Children's Tumor Foundation
95 Pine Street, 16th Floor
New York, NY 10005

212-344-6633 or 800-323-7938

info@ctf.org

www.ctf.org

Children's Tumor Foundation
NFCAMP

NF International Summer Camp

Salt Lake City, Utah



www.ctf.org/camp

Camp Program Facts

2010 NF CAMP DATES

July 17-23 • July 24-30

Tuition: \$650

The NF International Summer Camp is held in two one-week sessions (6 nights/6 days) each summer in Salt Lake City, Utah. Each week will include similar activities and campers are welcome to attend whichever session best fits their family's schedule.

The program is organized for campers between the ages of 12 and 21. Those older than 21 may register in special circumstances, but if capacity is limited priority is determined by age.

Counselor-in-training program available on a limited basis for qualified campers. Please inquire for details.

Activities include:

- Horseback riding
- Day at the water park (off-site)
- Swimming and pool games
- High and low rope courses (*very popular!*)
- Climbing wall
- Survivor Day
- Canoe trip to reservoir
- and much more!



The campers are hosted by Camp Kostopulos (Camp K), a special needs camp that has been in operation since 1967 (www.campk.org). Camp K grounds and resources are rented by the Children's Tumor Foundation (CTF), for our exclusive use, for the duration of both NF Camps.

Campers arrive in Salt Lake City Saturday between 10am and 4pm and depart the following Friday morning. All campers are met at the airport by Camp K and Foundation staff. Children traveling as unaccompanied minors (UAMs) are picked up at the gate, as required by airport security procedures. Prior arrangements are required.

Camp K has an RN on staff who meets with each camper and discusses their medication regimen (if any).

Each program accommodates 40 campers, and is filled on a first-come, first-served basis. There are two cabins for sleeping arrangements: one for boys and one for girls.

Camp tuition is \$650 and covers food, room and board and all activities. Transportation to and from Salt Lake City Airport is the responsibility of the parents and/or guardians.

All off-site activities (bowling, movies, meals, etc.) are sponsored by the Children's Tumor Foundation. CTF staff schedules each day with assistance from Camp K staff members.

Only emergency phones are located on Camp K grounds. Children may bring cell phones but they may only be used at a specific time each day to phone home.

Children are closely monitored by Camp K counselors (5-to-1 ratio), not including assistant counselors, interns, and CTF representatives.

If you need any additional information, CTF staff is always happy to speak with you to answer your questions or discuss your concerns. Contact Patrice Pancza at ppanca@ctf.org or 1-800-323-7938.



Children's Tumor Foundation
NFCAMP

Sponsor a Camper

I would like to help sponsor a child for the NF Summer Camp. Any amount would be appreciated.

NAME: _____

ADDRESS: _____

CITY, STATE, ZIP: _____

PHONE: () _____

Select payment type: (circle one)

AMEX MasterCard Visa Check

AMOUNT: \$ _____

NAME ON CARD: _____

CARD NUMBER: _____

EXPIRATION DATE: _____

SIGNATURE: _____

Please complete form and mail with your donation to the address on back of this brochure.

**WELLS
FARGO**

*The Children's Tumor Foundation
wishes to acknowledge Wells Fargo
as a generous supporter of NF Camp.*